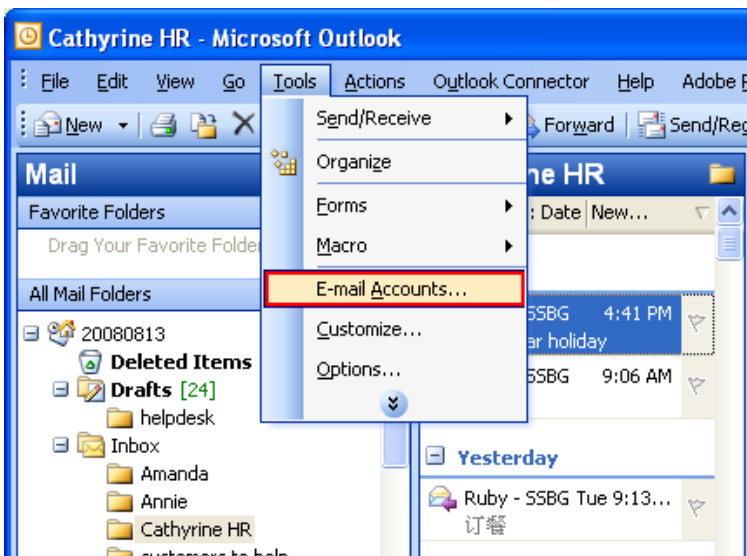


Using Alternative Outlook SMPT Sending Port

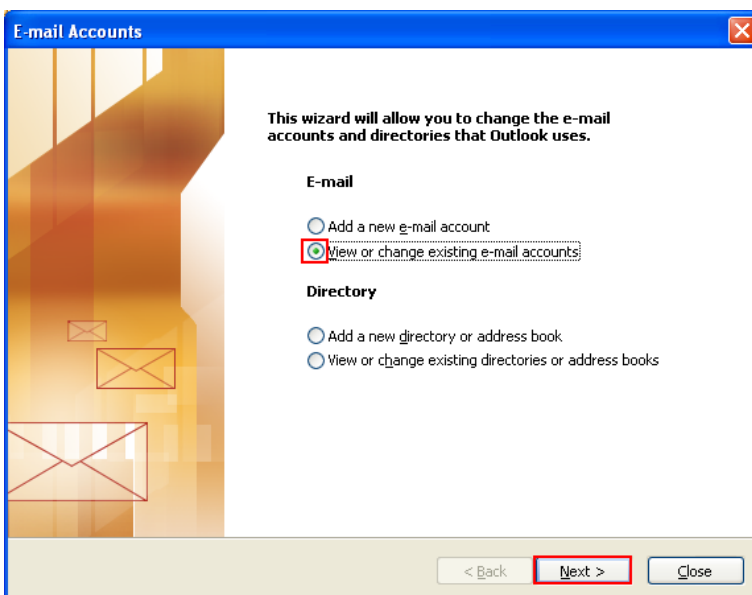
You may sometimes have a problem with sending email using Outlook but receiving is no problem, especially when outside of China. This is often caused by the hotel or local ISP blocking the standard SMPT sending Port (Port 25) for Outlook. To overcome this problem it is possible to use an alternative SMPT port for Outlook, this is Port 587. This is simple and the step by step guide below explains how.

If sending is still a problem then you need to ask the hotel or local ISP for guidance on the necessary Outlook SMPT settings for the location you are working from.

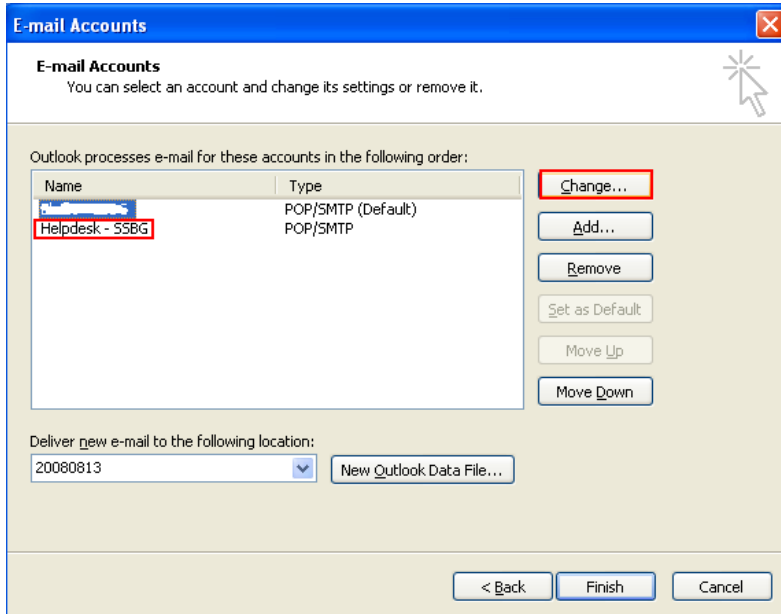
1. Open outlook and go to tools → E-mail Accounts.



2. Click 'Next'



3. Then select your email account – click ‘change’



4. Select ‘more settings’ –> advanced tab. Click outgoing server (SMTP) and change from 25 to 587.

