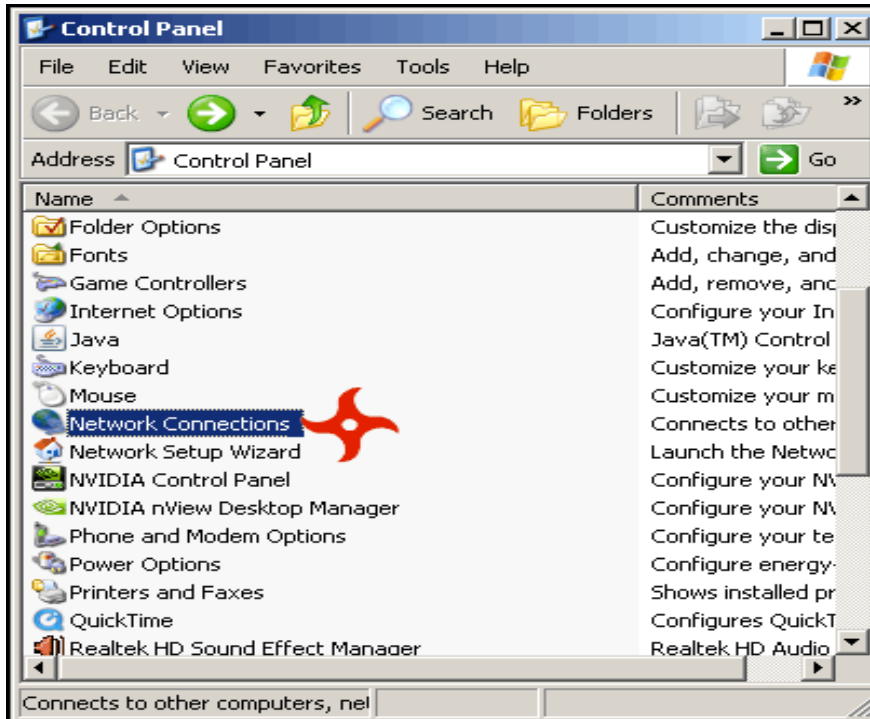
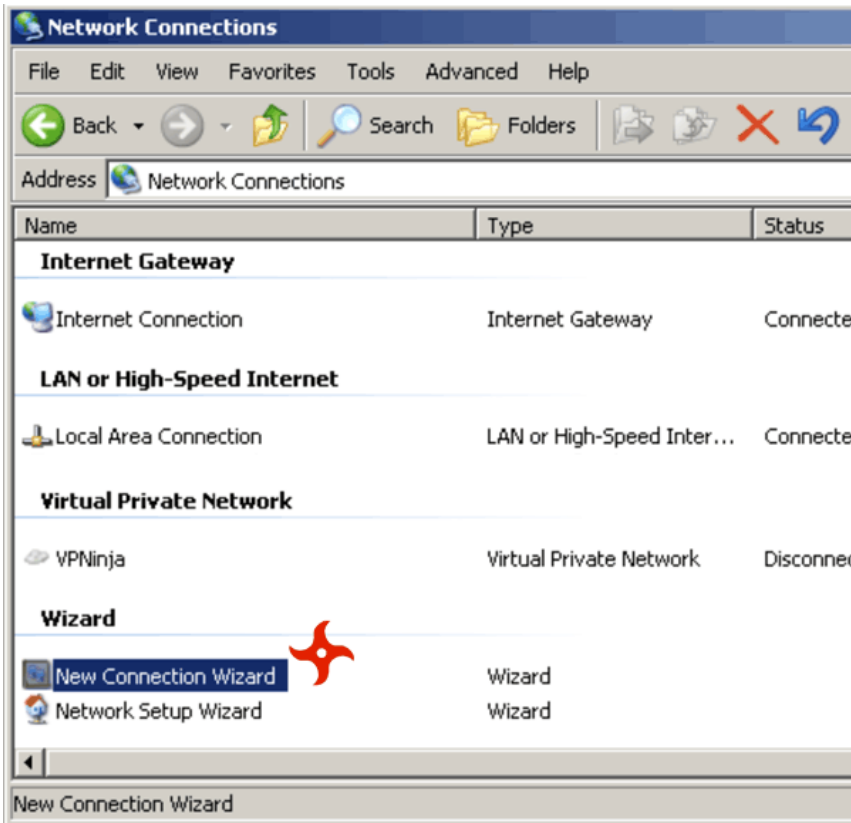


Setup: Windows XP, 2000, 2003

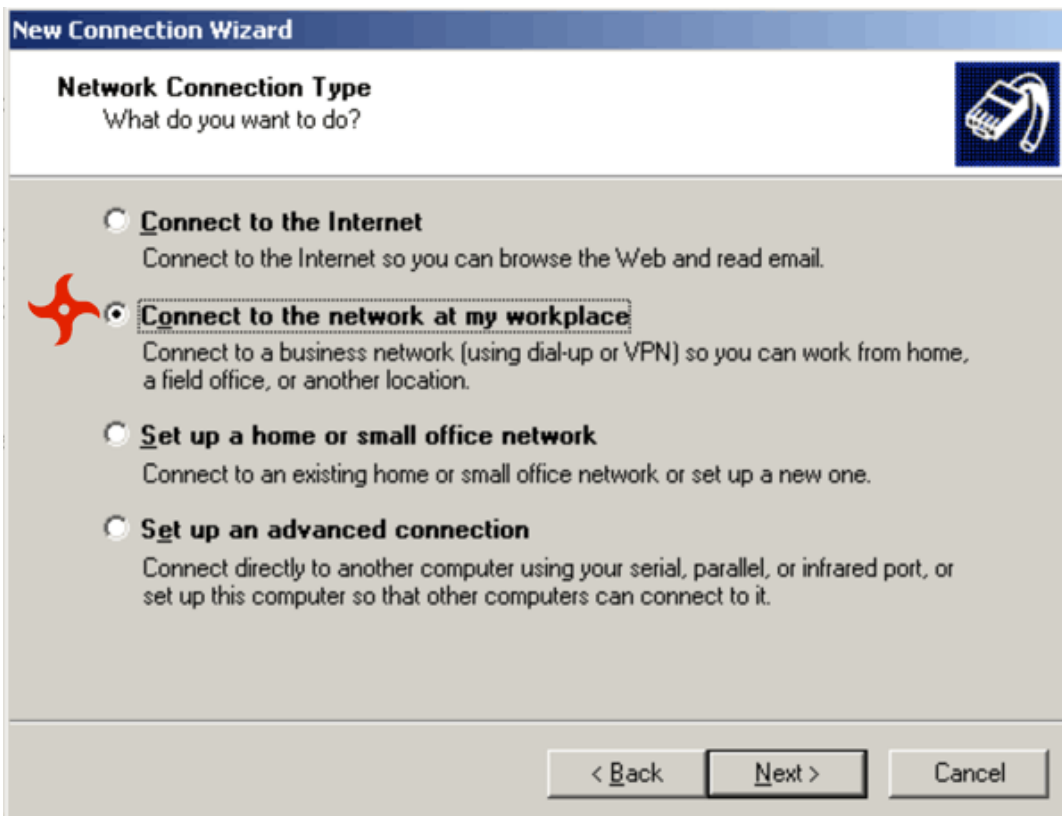
Open your Network Connections from Control Panel or Start Menu



Double-click New Connection Wizard




Select Connect to the network at my workplace




Select Virtual Private Network Connection

New Connection Wizard

Network Connection
How do you want to connect to the network at your workplace?

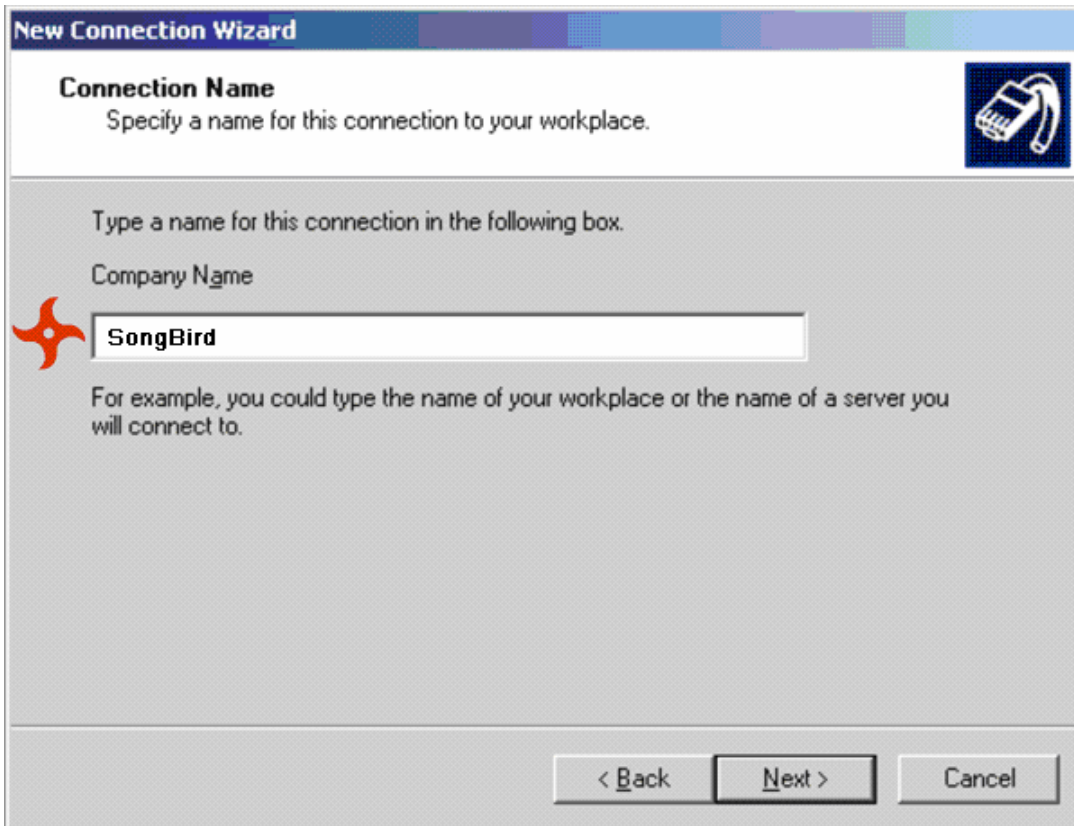


Create the following connection:

- Dial-up connection**
Connect using a modem and a regular phone line or an Integrated Services Digital Network (ISDN) phone line.
-  **Virtual Private Network connection**
Connect to the network using a virtual private network (VPN) connection over the Internet.

< Back Next > Cancel

Type SongBird in the Company Name and click "Next"




New Connection Wizard

Connection Name
Specify a name for this connection to your workplace.

Type a name for this connection in the following box.

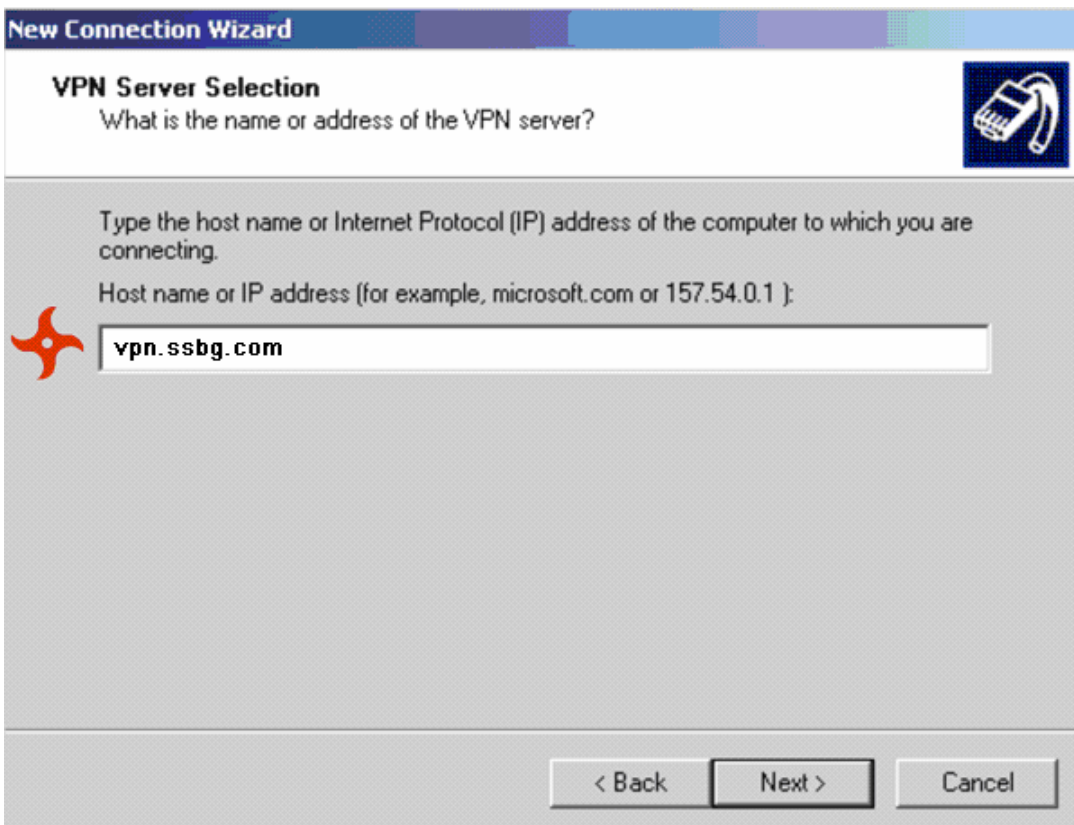
Company Name



For example, you could type the name of your workplace or the name of a server you will connect to.

< Back Next > Cancel

Enter vpn.ssbg.com in the Host name or IP Address field, then click "Next"




New Connection Wizard

VPN Server Selection
What is the name or address of the VPN server?

Type the host name or Internet Protocol (IP) address of the computer to which you are connecting.

Host name or IP address (for example, microsoft.com or 157.54.0.1):

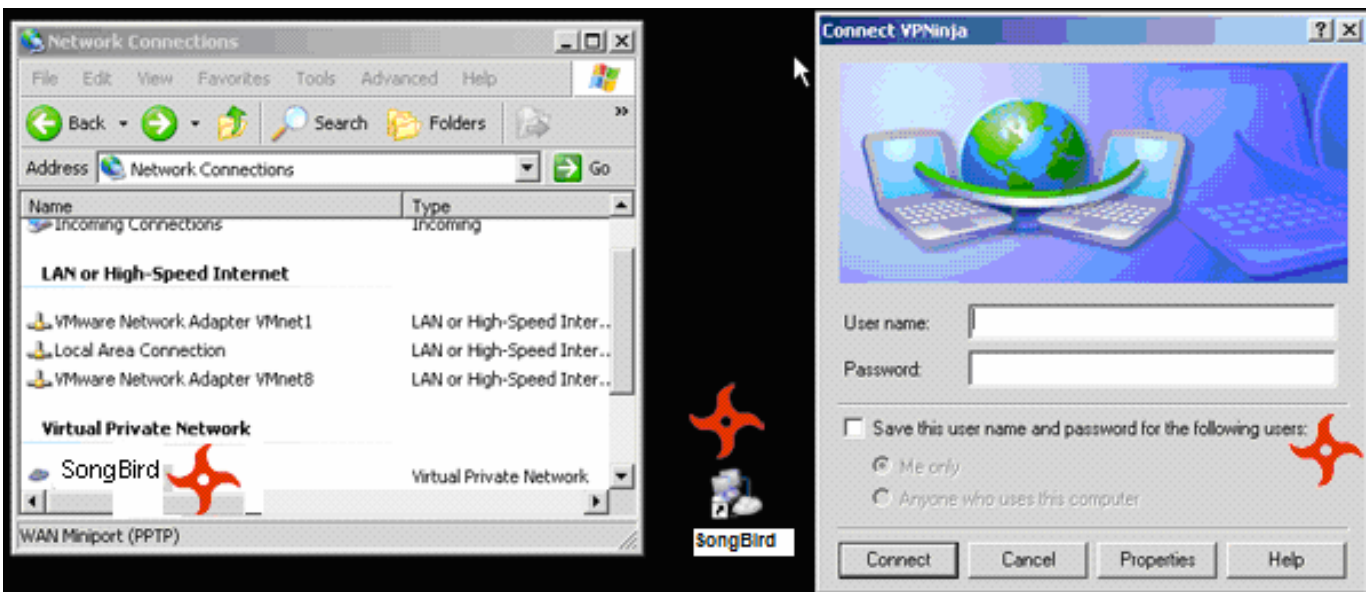


< Back Next > Cancel

Select "Add a shortcut to my desktop" - this will create a shortcut to the **SongBird** VPN service on your desktop, then click "Finish"



Type in the VPN username and password that you received via email, and check off the "Save this user name...". From now on, the **SongBird** VPN service can be launched via the desktop **SongBird** icon, or from your Network Connections folder.



You should now see an extra "connection" icon in the lower-right-hand "system tray" that says "SongBird" when you hover the mouse over it. Clicking on it will give you the VPN status.

