

How to Setup Exchange account in Entourage 2008 and Outlook 2011

Requirements:

For Entourage 2008

1. Download all updates for entourage 2008 until it reach version 13 web services edition

Download updates from here. <http://www.microsoft.com/mac/downloads> or use the entourage "check for updates" (Help -> check for updates)

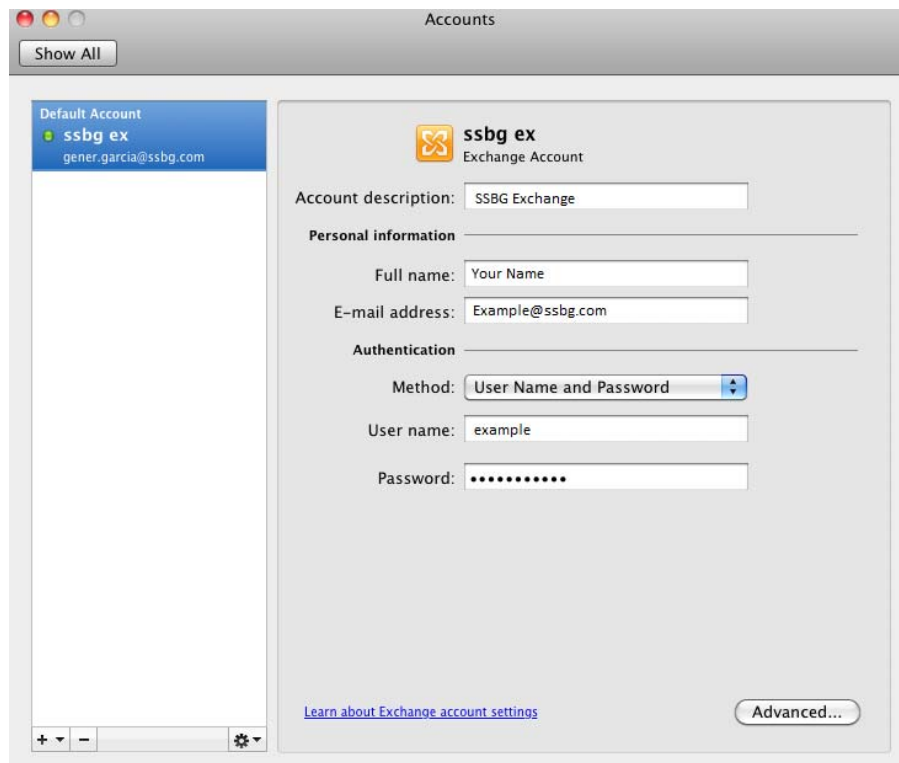
Update Guide: Entourage 12.0.0 -> 12.1.2 -> 12.2.3 -> 12.2.4 ->12.2.8 -> 13.0.0

For Outlook 2010

Outlook 2010 is fully compatible with Microsoft Exchange 2010

Email Setup Guide:

1. Click Outlook -> Preference -> Accounts
2. Click add "+" then select exchange
3. Fill the blanks with the information as follow
 - a. Account description: SSBG Exchange
 - b. Personal information
 - Full name: Your Name
 - Email address: your email address (ex. example@ssbg.com)
 - c. Authentication
 - Method : user name and password
 - Username: username (ex. example)
 - Password: email password



4. Click advance
5. Microsoft Exchange server : mail.ssbg.com
6. Check use SSL to connect
7. OK

